



4268 FONTEYN WAY, NORTH VANCOUVER, BC V7R 4L4

604-929-8627 (t) 604-929-6154 (f)

results@slainc.ca(e) www.slainc.ca(w)



Who We are

Senga M. Lindsay, MBCSLA, NPD - Partner, Greenroofs Inc.

Senga is a registered Landscape Architect and has been practising in the craft for over 15 years. Her work includes a myriad of landscapes on manmade structures from traditional landscapes to green roofs.

Senga is currently teaching the 'Advanced Design' course at Kwantlen College. This course includes green roof design.

She is a member of the BC Nursery Trades Association Landscape Standards Committee incorporating green roof criteria, and also stands on the BC Regulatory Committee implementing government policies for green roof construction.

Jarome Sheriland - Partner, Greenroofs Inc.

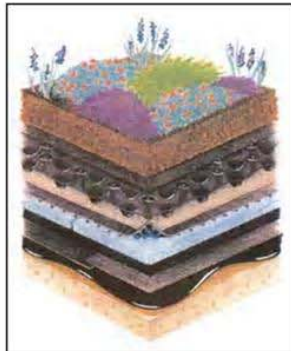
Jarome is owner of Refuge Landscape Design and Construction and has been installing landscapes (on roofs, structures and on grade) for over 15 years in the Lower Mainland.

A native of Germany (the mecca for green roofs), Jarome was installing green roofs in Germany over 30 years ago.

Jarome brings his expertise and fine German craftsmanship to the **Greenroofs Inc.** team.

Extensive Green Roof

- Soils 6" or less
- Lightweight Soils Used
- Saturated Soil Weights =16 - 45lbs/sq. ft
- Plant Diversity Limited To Grasses, Perennials
- Suitable for Renovation/ Retrofit Projects
- Built Mainly For Environmental Benefits As Opposed to Human Habitation



Intensive Green Roof

- Soils 6" -24"+
- Lightweight Soils Used
- Saturated Soil Weights =60 - 200lbs/sq. ft
- Plant Diversity High -Ranges From Grasses and Perennials To Shrubs and Trees-Suitable for Renovation/ Retrofit Projects
- Often Used for Human Use/Amenity Space



Green Roof Types - Illustrations Courtesy of Hydrotech Membranes Inc.



Why Greenroofs Inc.?

We offer design - build - maintenance packages for new, retrofitted roofs and manmade structures. All or a portion of these services are available.

Our team is composed of landscape architects, experienced green roof contractors, and horticulturalists.

We work with all the proven manufacturers of green roof technologies - membranes, drainage, leak detection systems, soils and plants.

We also work in conjunction with roofing contractors such as  Canada (www.flynn.ca) the leading roofing contractor in Canada and installer of the largest green roof in Canada - the War Memorial in Ottawa (LEED GOLD) with 120,000ft² of green roof.

"This synergy provides our clients with a cost effective seamless interface from design, construction to maintenance and warranty periods "



Services Offered

d e s i g n - i n s t a l l - m a i n t a i n



Design

l a n d s c a p e s o v e r s t r u c t u r e s

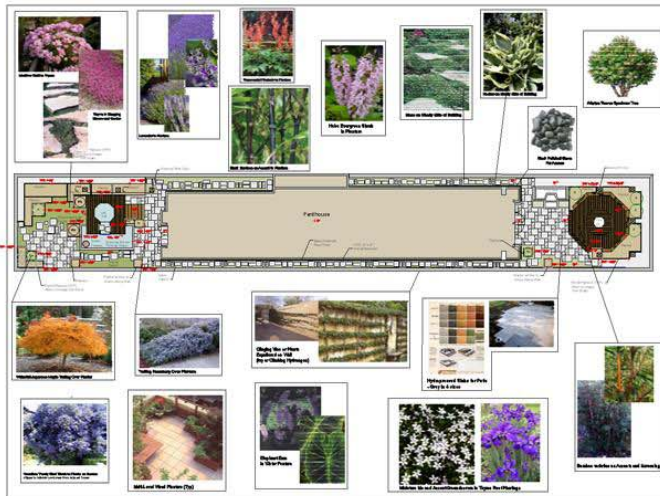
Design and detailing and project administration is overseen by Senga Lindsay.

As Landscape Architects we can provide a full spectrum of services for landscapes on the ground plane.

We also work with Landscape Architects to derive the best solution for the green roof components of their project.

Cost estimates and options are explored during design and solutions tailored to the client's programming and budget.

We can work with our clients in negotiating potential development 'incentives' with governing bodies.



Green Roof Under Design

- Located Downtown Vancouver, BC
- Penthouse on 18 Story Building
- Soil depths range from 3" - 24" (Combination Intensive and Extensive Gardens)
- Plant Material Selected For Drought, Wind and Ocean Spray Tolerance



Green Roofs

- Located Whistler, BC
- Both extensive systems, 10+ years and located over garage slabs

Construction

Installation is overseen by Jarome Sheriland, (partner) and his crew of green roof installers.

Our crew is trained in the latest green roof technologies and work closely with roofing contractors to provide a seamless flow from roof membrane to final landscape (soil, planting, walls, paving) installation.

The result is efficient, high quality construction - the value being passed onto the client.

We also provide traditional at grade landscape construction (hard and softscape etc.) as part of any green roofing project.

Maintenance

Overseen by Jarome Sheriland, his crew and administrated by Christy Voelker - our resident horticulturalist.

Each project has its own evaluation sheet and check list of items to be included in the maintenance program.

We work with property managers and strata owners to ensure the most cost effective program is implemented.